



2019 ASHE Update

May 2, 2019

© 2019 American Society for Health Care Engineering,
a professional membership group of the American Hospital Association
155 N. Wacker Drive, Suite 400 | Chicago, IL 60606
ashe.org | ashe@aha.org | 312-422-3800



Dean Pufahl, CHFM, CHC

2019 ASHE President

Director Facility Services
Froedtert Health – St Joseph's Hospital
West Bend, Wisconsin

The American Society for Health Care Engineering (ASHE)



With 12,500+ members, ASHE is the largest professional membership group of the American Hospital Association (AHA).

[ashe.org](https://www.ashe.org)

ASHE Mission, Vision, and Values

Mission:

Dedicated to optimizing the health care physical environment

Vision:

To engage stakeholders in the creation of health care environments that are optimal for healing.

Values:

Integrity, Innovation, Fellowship,
and Stewardship



ASHE Strategic Imperatives

**Operational
Excellence**



**Career
Development**



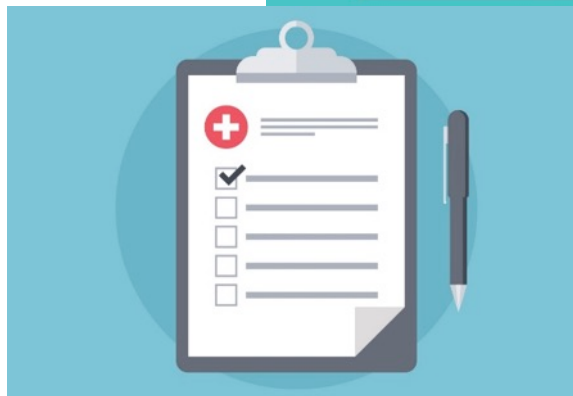
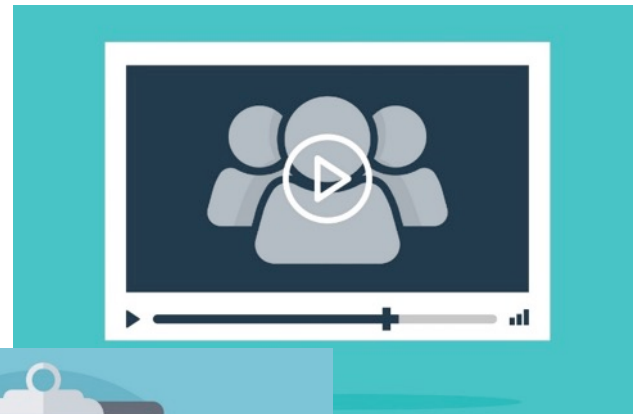
**Professional
Reputation**



Operational Excellence

Codes and Standards Resources Provided by ASHE

- Latest [CMS Conditions of Participation](#) changes
- Resources:
 - [Tools](#)
 - [Monographs](#) and [publications](#)
 - [Education programs](#)
- Get answers:
 - [My ASHE](#) online community
 - [Just Ask ASHE](#) webinars (live and archived)



FREE Monograph Downloads

ASHAE released 6 new monographs in 2018. Explore and download all available monographs at **ashe.org/monographs**.



Sustainability Resources



Greater efficiency supports patient care.

energytocare.org



sustainabilityroadmap.org

Career Development

ASHE's *Health Facilities Management*



- Streamlined communications
- Additional CEUs for members (10 issues per year vs. 4 issues!)
- Greater awareness of ASHE members-only resources

NEW! Career Map Self-Assessment Tool

- Allows members to rate themselves on various competencies
- Identifies career strengths and weaknesses
- Suggests resources/education to improve weak spots
- Launched in **Fall 2018**
- ashe.org/careermap



LEARN
ENGAGE
GROW

ashe.org/education

Education tailored for various audiences:

- Facility managers
- Engineering professionals
- Architects and planners
- Project managers
- Contractors
- Compliance managers
- And more

NEW Education Programs Released in 2018

- Medical Gas Cylinder Storage e-Learning Course | ashe.org/medgas
- Door Inspection and Maintenance Workshop | ashe.org/doors
- Ventilation of Health Care Facilities: Complying with ASHRAE Standard 170 | ashe.org/ventilation
- Physical Environment Survey Readiness Program | ashe.org/surveyready



Professional Reputation

Certification Information

- Certified Health Care Constructor
- Certified Health Care Facility Manager
- Certified Health Care Physical Environment Worker
- Exam review courses
- Resource lists online



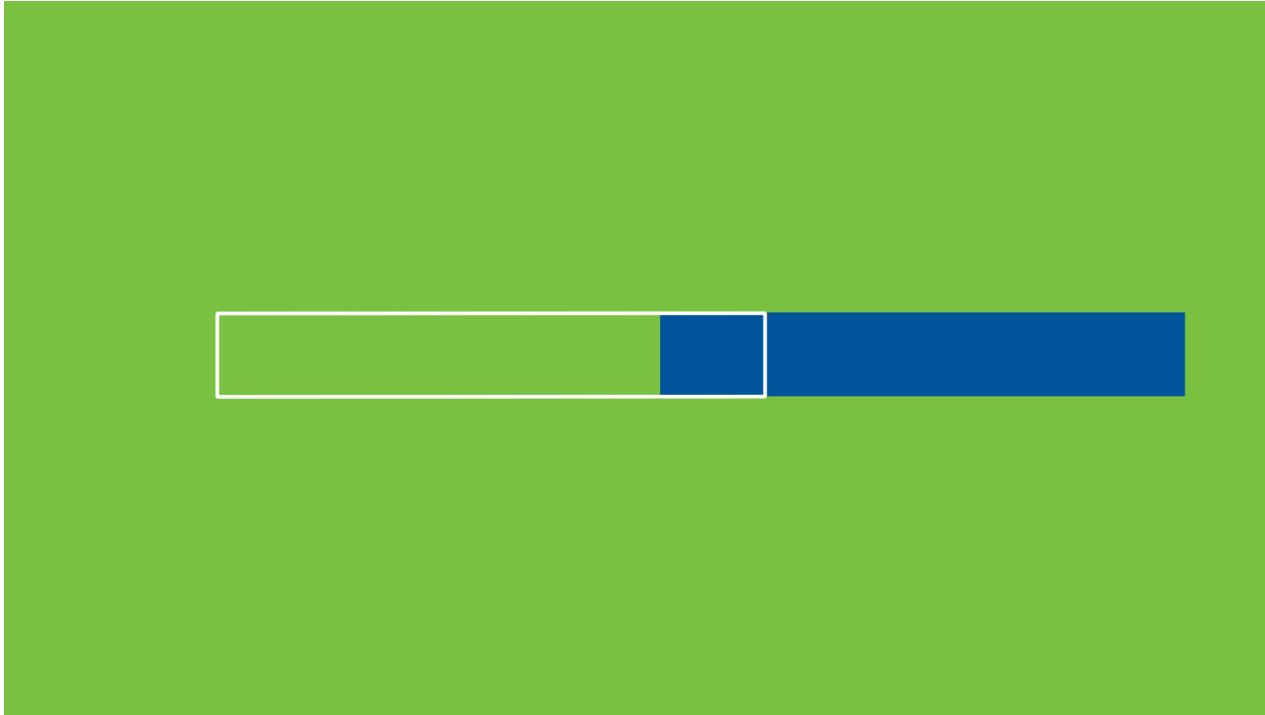
Learn more at [ashe.org/
certifications](https://www.ashe.org/certifications)

Succession Planning Resources

- Monograph: *Succession Planning: Preparing for the Future of Your Facility and Your Career* | ashe.org/monographs
- Volunteering with My ASHE | my.ashe.org
- Video for high school and college students | ashe.org/yourfuture



Succession Planning video on ashe.org/yourfuture



YES - It's time to step up!!

Chapter Leadership Forum (ASHE Annual)

- Affiliation Awards
- Chapter Listening Session
- Redesign the relationship between the Chapter and ASHE

Where can I find
additional information?

ASHE Conferences



2019–2020 Conference Dates & Locations:

July 14–17, 2019 | Baltimore, MD

August 2–5, 2020 | Chicago, IL

ashe.org/annual



2020 Conference Dates & Locations:

March 22–25, 2020 | San Antonio, TX

pdcsummit.org

ASHE's On Demand Library



ashe.org/ondemand

NEW web page layout
launched in **Summer
2018!**

Members-Only Online Community

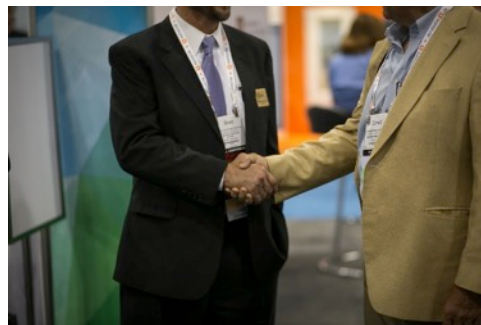


- Launched to all members in **December of 2017.**
- My ASHE: Like the Listserv, only better
- Improved features for member-to-member communication
- New volunteer platform to promote member engagement

Get Involved with ASHE

- If you are not an member, join!
- If you are a member, get involved!
- Participate in My ASHE
- Attend conferences
- Volunteer

[ashe.org](https://www.ashe.org)





Questions? Suggestions?

© 2019 American Society for Health Care Engineering,
a professional membership group of the American Hospital Association
155 N. Wacker Drive, Suite 400 | Chicago, IL 60606
ashe.org | ashe@aha.org | 312-422-3800